



Overview

OPX Webforms provide a unique tool for the business operations team. It allows users to create and deploy web forms on demand for everyday use which are scalable, robust, secure and, most importantly, usable.

Features

OPX webforms are created by the OPX superuser team and provide out-of-the-box:

- data entry and query facilities and any painted form
- automatic database table creation and maintenance
- automated report model creation and maintenance

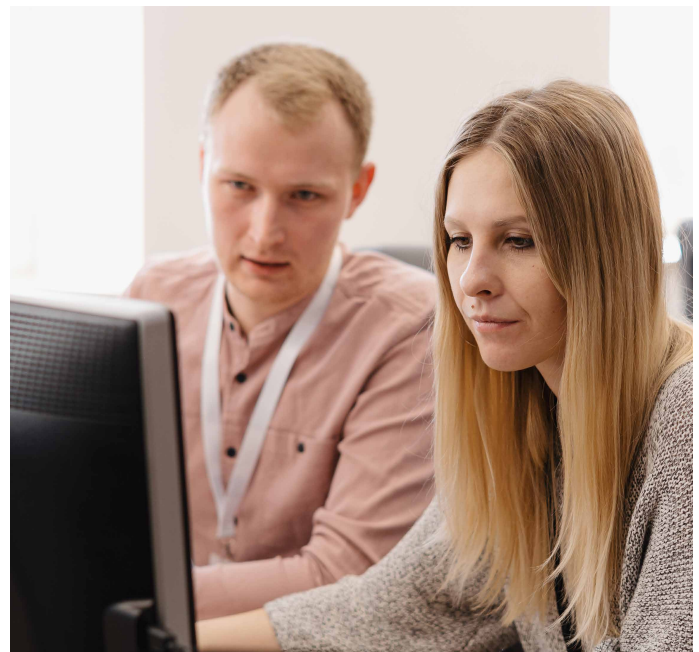
Webforms are usable within the OPX user or administrator tools, and also available outside of OPX frameworks to any user with browser access and appropriate permissions.

Users can create web forms using the webform builder which allows the creation and maintenance of forms to replace everyday paper items such as progress tally sheets, checklists, ad-hoc call notes, holiday requests, HR requisition requests and more.

Webforms have many comprehensive features including:

- drag and drop controls (text, dates, numbers, checkboxes, buttons)
- panels allowing grouping of controls
- multi-page forms
- simple and complex dropdown lists
- query by example

- images and logo use
- business rules for data validation, optional panels display setting properties
- interoperability with OPX Scriptflow¹
- ability to start an OPX² process using this form as the payload item
- ability to call web services



¹ For users with OPX ScriptFlow to be in use

² For users with OPX Core